



Academic Medicine  
Research Institute  
Duke-NUS SingHealth



# RESEARCH GRAND ROUNDS

## Solving Critical Unmet Medical Needs by Understanding the Human Immunome: The Translational Value of the EPIC Platform

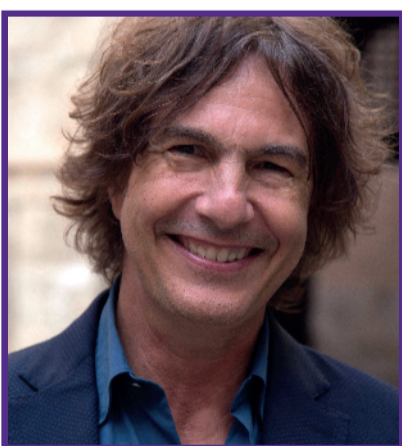
An AI-powered platform – Extended Poly-dimensional Immunome Characterisation (EPIC) – have been developed to understand the architecture of the human immunome and to dissect pathogenic elements. In this talk, Prof Albani will illustrate how the EPIC platform is able to leverage on this knowledge to define new therapeutic targets and predict clinical fate in the backdrop of unmet needs in human diseases. The various translational relevance of the EPIC platform will also be discussed.

**Wednesday, 16 September 2020**  
**via Zoom**  
**12:30 to 1:30pm**



Register for free now at  
<https://qrd.by/RGR16Sept>  
Register by **11 September 2020**  
CME and CPE points may be awarded.

### Speaker Details



#### **Prof Salvatore Albani**

**Director, SingHealth Duke-NUS Translational Immunology Institute (TII)**  
**Professor of Medicine, Duke-NUS Medical School**

- Singapore Translational Research Investigator Award (STaR) 2020 recipient
- Former Director of the Translational Medicine Unit, Clinical Investigation Institute, and Professor of Medicine and Pediatrics, University of California
- M.D., Ph.D. with deep experience and knowledge in the area of autoimmune inflammatory diseases
- Ongoing involvement in the development of high throughput technology platforms to provide tools for knowledge-based diagnostic and therapeutic decisions

### Hosted by



#### **Dr Stephen Phua**

**Chairman, Menarini Biomarkers**

- MBBS, MSc, Fellow of the Faculty of Pharmaceutical Medicine (FFPM)
- Previous Chairman of the scientific advisory board of Genexine, a Kosdaq listed biotech company and on the board of Zuellig Pharmaceutical
- Previous Chief Executive Officer (CEO) of Agenix Limited and President of Asia Pacific of IMS Health, a world leading provider of information solutions now known as IQVIA

**Organised by**  
**SingHealth Office of Research**