



**Emergency
Medicine**

The Max Harry
Weil Institute
FOR CRITICAL CARE RESEARCH & INNOVATION



Strategies to Optimize International Collaboration in Emergency Care Research



@neumar_robert

Robert W. Neumar, MD, PhD
Department of Emergency Medicine
Department of Molecular & Integrative Physiology
University of Michigan



neumar@umich.edu

EM-ACP PERC Research Day, March 24, 2025

Disclosures

- No Financial Disclosures
- Co-Chair: International Liaison Committee on Resuscitation (ILCOR)
- President and Board Chair: SaveMiHeart
- Research Funding: NIH, DOD, AHA, Laerdal Foundation
- Research Equipment: BrainCool



MICHIGAN MEDICINE
UNIVERSITY OF MICHIGAN

**Emergency
Medicine**

EM-ACP PERC Research Day, March 24, 2025

The Max Harry

Weil Institute

FOR CRITICAL CARE RESEARCH & INNOVATION

Outline

- Why do we need international EM research collaboration?
- Barriers and strategies
- Examples of work-in-progress



**Emergency
Medicine**

EM-ACP PERC Research Day, March 24, 2025

The Max Harry

Weil Institute

FOR CRITICAL CARE RESEARCH & INNOVATION

Why Research?



Create new knowledge
to improve patient care
and outcomes



**Emergency
Medicine**

EM-ACP PERC Research Day, March 24, 2025

The Max Harry

Weil Institute

FOR CRITICAL CARE RESEARCH & INNOVATION

Why Emergency Care Research?



World Health
Organization

SEVENTY-SIXTH WORLD HEALTH ASSEMBLY
Agenda item 13.1

WHA76.2
30 May 2023

“Over half of deaths and over a third of disability in low- and middle-income countries could be addressed by the implementation of effective emergency and critical care.”

Integrated emergency, critical and operative care for universal health coverage and protection from health emergencies¹

1. CALLS FOR timely additional efforts globally to strengthen the planning and provision of emergency, critical and operative care services as part of universal health coverage, so as to meet population health needs, improve health system resilience and ensure public health security;¹



MICHIGAN MEDICINE
UNIVERSITY OF MICHIGAN

**Emergency
Medicine**

EM-ACP PERC Research Day, March 24, 2025

The Max Harry

Weil Institute

FOR CRITICAL CARE RESEARCH & INNOVATION

Why International Collaboration in Emergency Care Research?



- *Limited research workforce*
- *Limited research training infrastructure*
- *Limited research funding*
- *Limited progress*



**Emergency
Medicine**

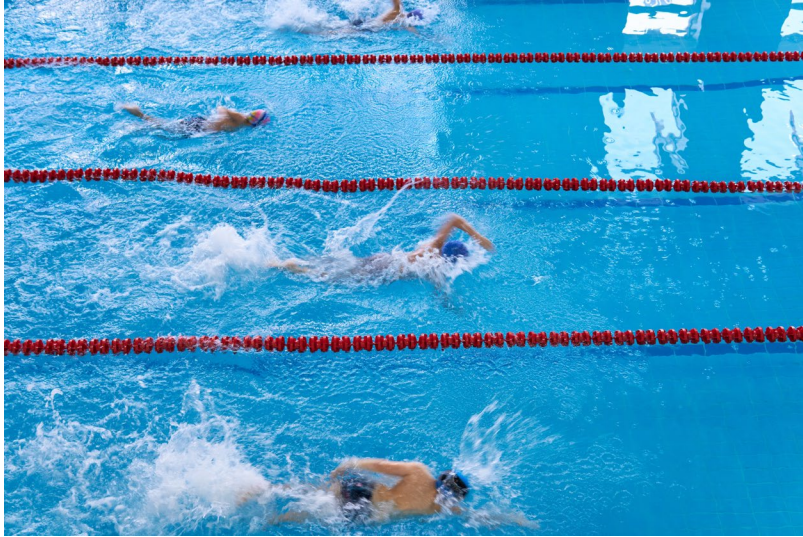
EM-ACP PERC Research Day, March 24, 2025

The Max Harry

Weil Institute

FOR CRITICAL CARE RESEARCH & INNOVATION

Transition from Competition to Collaboration



Barriers to International Research Collaboration

- Communication Barriers
- Cultural Differences and Trust Issues
- Regulatory and Ethical Differences
- Intellectual Property and Data Ownership
- Funding Mechanisms
- Logistical Challenges
- Language and Training
- Bureaucratic and Administrative Hurdles
- Political and Economic Instability



**Emergency
Medicine**

EM-ACP PERC Research Day, March 24, 2025

The Max Harry

Weil Institute

FOR CRITICAL CARE RESEARCH & INNOVATION

Strategies to Optimize International Research Collaboration

- Building Strong Partnerships
 - Binary, Networks, Network Coalitions
 - Face-to-face time
- Effective Communication & Coordination
 - Manage time zone and primary language differences
 - Regular virtual meetings
 - Electronic group communication
- Harmonizing Research Protocols
 - Standardized protocols
 - Guidelines for comparable data
 - Engage local ethical boards early



Strategies to Optimize International Research Collaboration

- Resource & Data Sharing
 - Equitable Resource Allocation
 - Open Data Initiatives
 - Managing Data Privacy
- Fair IP Agreements
- Multinational Funding Coalitions
- Engage International Organizations
 - IFEM
 - WHO



Examples of Work-in-Progress



- Michigan-Warwick Clinical Trials Partnership
- Emergency Medicine Education & Research by Global Experts (**EMERGE**)
- TRANScontinental Cardiac Arrest Experimental Network for Discovery (**TRANSCEND**)
- International Resuscitation Clinical Trial Network Consortium



MICHIGAN MEDICINE
UNIVERSITY OF MICHIGAN

Emergency
Medicine

EM-ACP PERC Research Day, March 24, 2025

The Max Harry

Weil Institute

FOR CRITICAL CARE RESEARCH & INNOVATION



**MEMORANDUM OF UNDERSTANDING
FOR ACADEMIC AND SCIENTIFIC COOPERATION
BETWEEN
THE REGENTS OF THE UNIVERSITY OF MICHIGAN
ON BEHALF OF ITS
MEDICAL SCHOOL
AND
THE UNIVERSITY OF WARWICK MEDICAL SCHOOL**

Purpose

The purpose of this Memorandum of Understanding (“MOU”) is to promote cooperation in medical education and scientific research between the Regents of the University of Michigan, a Michigan Constitutional corporation, on behalf of its Medical School, located in Ann Arbor, Michigan, United States of America, and The University of Warwick Medical School located in Coventry, UK.



MICHIGAN MEDICINE
UNIVERSITY OF MICHIGAN

**Emergency
Medicine**

EM-ACP PERC Research Day, March 24, 2025

The Max Harry

Weil Institute

FOR CRITICAL CARE RESEARCH & INNOVATION.

Funding Pathways

[HOME](#) | [RESEARCH](#) | [FUNDING PATHWAYS](#)

Supporting interdisciplinary, co-designed projects that drive impact

The Center for Global Health Equity offers comprehensive, wrap-around support for an extensive array of interdisciplinary projects with the potential for high impact. Understanding that successful initiatives require more than just financial backing, we provide an experienced team of seasoned project managers dedicated to guiding you through every step of your project journey. Together, we empower transformative scholarship that addresses the world's most pressing health challenges.

Seed Grants

Open to teams that are co-led by U-M faculty and global collaborators.

Seed Grants support exploratory projects that catalyze novel ideas and collaborations and build a case for larger-scale or more expansive projects that will help people live healthier and longer lives. *Open to U-M faculty and global collaborator teams.*

- Grant amount: up to \$35,000
- Project duration: up to 12 months



MICHIGAN MEDICINE
UNIVERSITY OF MICHIGAN

**Emergency
Medicine**

EM-ACP PERC Research Day, March 24, 2025

The Max Harry

Weil Institute

FOR CRITICAL CARE RESEARCH & INNOVATION

Michigan-Warwick Clinical Trials Partnership

Building an International Platform for Collaborative Clinical Trials in
Prehospital, Emergency, Perioperative, and ICU Care.



Strategies to Innovate EmeRgENcy
Care Clinical Trials Network



Clinical Trials Unit



**Emergency
Medicine**

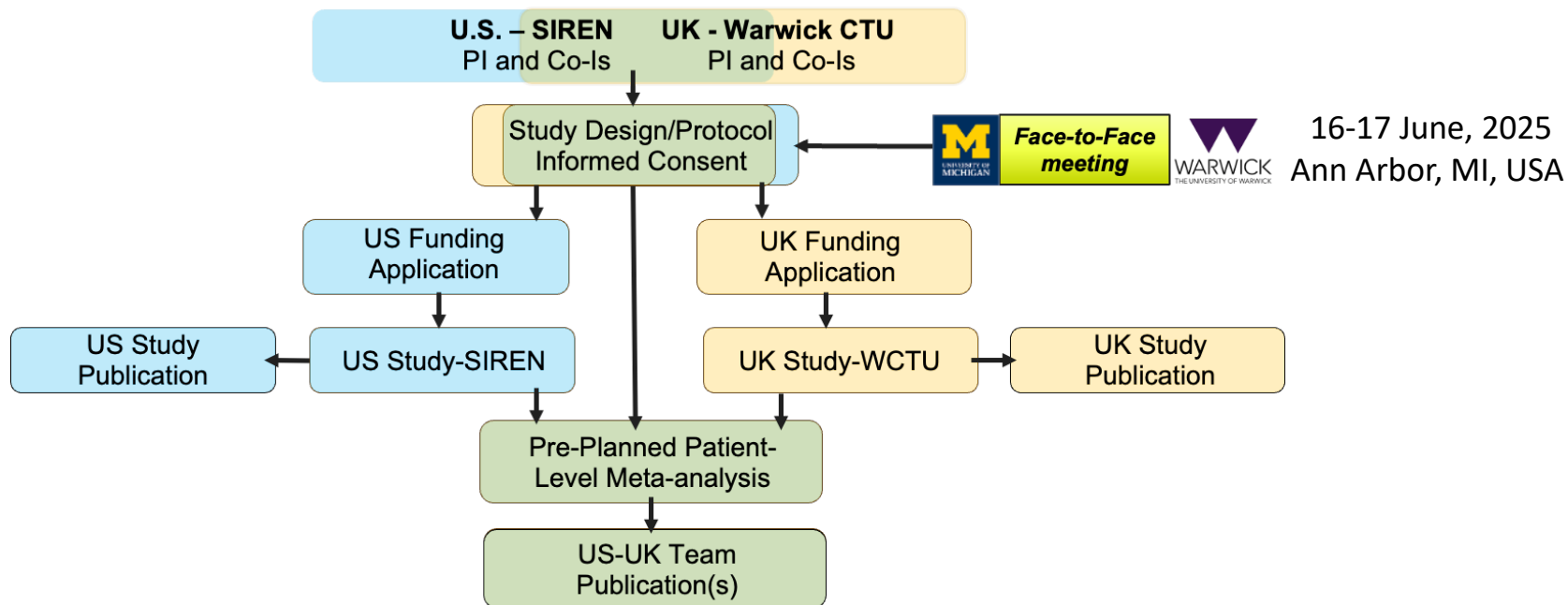
EM-ACP PERC Research Day, March 24, 2025

The Max Harry

Weil Institute

FOR CRITICAL CARE RESEARCH & INNOVATION

Transatlantic Collaborative Pre-Hospital and ED Clinical Trials Model



MICHIGAN MEDICINE
UNIVERSITY OF MICHIGAN

Emergency
Medicine

EM-ACP PERC Research Day, March 24, 2025

The Max Harry

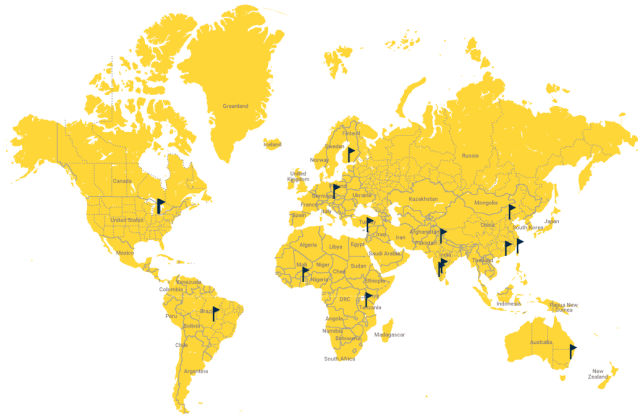
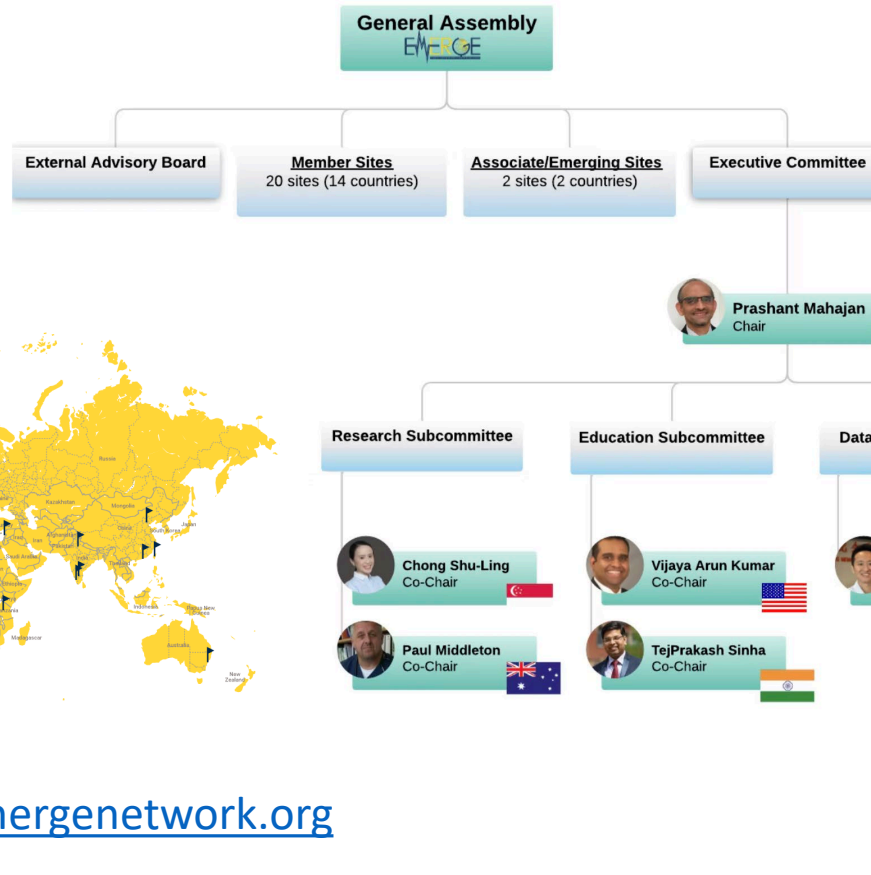
Weil Institute

FOR CRITICAL CARE RESEARCH & INNOVATION.



EMERGE is a network of experts in Emergency Departments who have come together to collaborate in research and share emergency medicine research related education. University of Michigan's emergency research team along with its international steering committee is striving to build EMERGE network.

EMERGE Organizational Chart



<https://www.emergenetwork.org>



MICHIGAN MEDICINE
UNIVERSITY OF MICHIGAN

Emergency
Medicine

EM-ACP PERC Research Day, March 24, 2025

The Max Harry

Weil Institute

FOR CRITICAL CARE RESEARCH & INNOVATION

Global Perspectives on Innovations in Emergency Care during the COVID-19 Pandemic: A Mixed Methods Study

Timothy Visclosky^{1,2}, Tara Funk², Chinonso Agubosim¹, Chung-Hsien Chaou³, Prashant Mahajan^{1,2}

Departments of ¹Emergency Medicine and ²Pediatrics, University of Michigan, Ann Arbor, MI, USA, ³Department of Emergency Medicine, School of Medicine, Chang Gung University, Taoyuan City, Taiwan

ORIGINAL RESEARCH

A Global Survey of Emergency Department Responses to the COVID-19 Pandemic

Prashant Mahajan, MD, MPH, MBA*
Chong Shu-Ling, MD, MBBS, MRCPCH, MCI, MPH†
Camilo Gutierrez, MD‡
Emily White, MS§
Benjamin A.Y. Cher, MS¶
Elizabeth Freiheit, PhD§
Apoorva Belle, MA, MHA||
EMERGE NETWORK*
Authors continued at end of article

*University of Michigan, Departments of Emergency Medicine and Pediatrics, Ann Arbor, Michigan
†KK Women's and Children's Hospital, Department of Emergency Medicine, Singapore
‡George Washington University School of Medicine and Health Sciences, Departments of Emergency Medicine and Pediatrics, Washington, District of Columbia
§University of Michigan, SABLE
¶University of Michigan Medical Center
||University of Michigan EMERGENCY Medicine, Ann Arbor, Michigan
§See supplemental file for full a

EMERGE Publications

The Emergency Medicine Education and Research by Global Experts (EMERGE) Network: Challenges and Lessons Learned

Prashant Mahajan, MD, MPH, MBA*
Shu-Ling Chong, MBBS, MRCPCH, MCI, MPH†
EMERGE Network‡

*University of Michigan, Department of Emergency Medicine, Ann Arbor, Michigan
†KK Women's and Children's Hospital, Department of Emergency Medicine, Singapore
‡University of Michigan, Emergency Medicine Education and Research by Global Experts (EMERGE) Network, Ann Arbor, Michigan (See full list of authors at the end of the article)

Global emergency medicine research priorities: a mapping review
Erin Kim^a, Prashant Mahajan^a, Chris Barousse^a, Vijaya A. Kumar^b,
Shu-ling Chong^c, Apoorva Belle^a and Dominik Roth^d



MICHIGAN MEDICINE
UNIVERSITY OF MICHIGAN

Emergency
Medicine

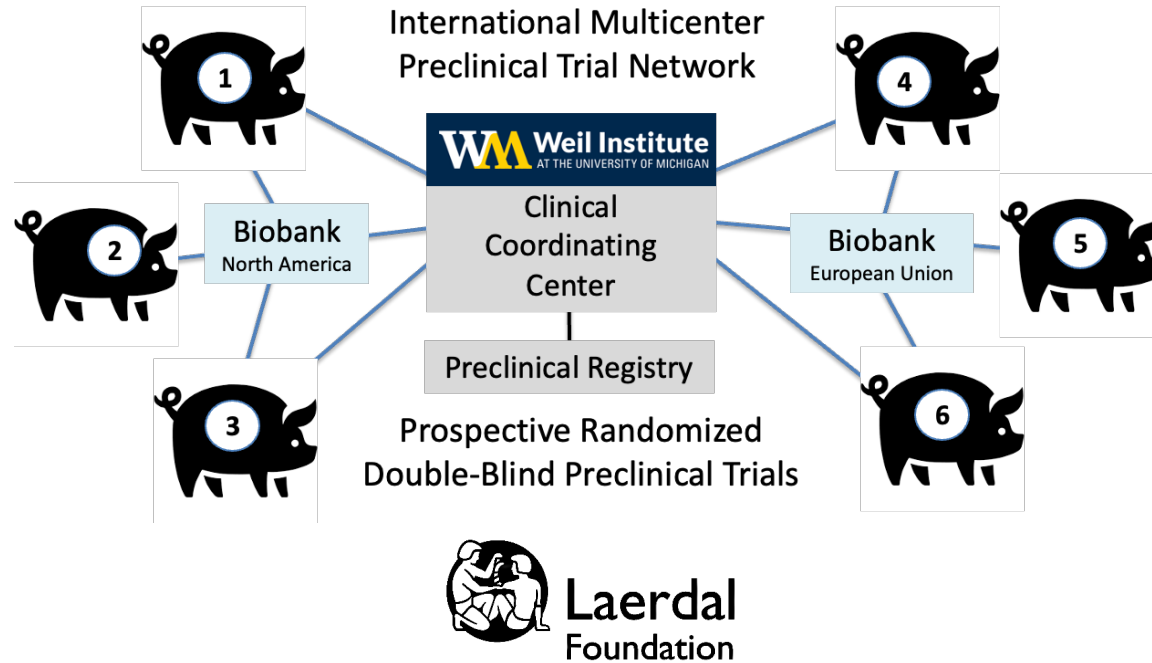
EM-ACP PERC Research Day, March 24, 2025

The Max Harry

Weil Institute

FOR CRITICAL CARE RESEARCH & INNOVATION

TRANScontinental Cardiac Arrest Experimental Network for Discovery (TRANSCEND)



LUND UNIVERSITY



universität
wien



AARHUS UNIVERSITY



UNIVERSITÀ
DEGLI STUDI
DI MILANO



Charles
University



연세대학교
YONSEI UNIVERSITY



NATIONAL
VETERINARY
COLLEGE
ALFORT
Paris - 1765



Laerdal
Foundation



MICHIGAN MEDICINE
UNIVERSITY OF MICHIGAN

Emergency
Medicine

EM-ACP PERC Research Day, March 24, 2025

The Max Harry

Weil Institute

FOR CRITICAL CARE RESEARCH & INNOVATION.

International Resuscitation Clinical Trial Network Consortium



MacArthur Foundation

100&Change

A competition for a \$100 million grant to fund a single proposal that promises real and measurable progress in solving a critical problem of our time.

#100andChange

Overview

Strategy

Timeline

Award Recipients

FAQs

Perspectives

News



MICHIGAN MEDICINE
UNIVERSITY OF MICHIGAN


Emergency
Medicine

EM-ACP PERC Research Day, March 24, 2025

The Max Harry

Weil Institute

FOR CRITICAL CARE RESEARCH & INNOVATION

A silhouette of a person standing on the edge of a dark, rocky cliff. The person is looking out over a vast body of water towards a bright sunset. The sun is low on the horizon, creating a strong reflection on the water's surface. The sky is filled with soft, orange and yellow light from the setting sun.

Our aspirations are the only true
limit to what we can accomplish



MICHIGAN MEDICINE
UNIVERSITY OF MICHIGAN

Emergency
Medicine

EM-ACP PERC Research Day, March 24, 2025

The Max Harry

Weil Institute

FOR CRITICAL CARE RESEARCH & INNOVATION

Questions



MICHIGAN MEDICINE
UNIVERSITY OF MICHIGAN

**Emergency
Medicine**

EM-ACP PERC Research Day, March 24, 2025

The Max Harry

Weil Institute

FOR CRITICAL CARE RESEARCH & INNOVATION