

# Detect | Enable | Innovate | Strengthen

## Fact Sheet

### Who we are

The Centre for Outbreak Preparedness (COP) at Duke-NUS Medical School in Singapore was established in 2022 to address the growing need for enhanced preparedness and response to infectious disease outbreaks in the Asian region. With a mission to bridge the gap between research, training, policy, and practice, COP aims to **enhance regional health security across South and Southeast Asia**.

### What we do

#### Asia Pathogen Genomic Initiative (Asia PGI)

As the flagship initiative of COP, Asia PGI aims to harness scientific and technical partnerships across Singapore and Asia to advance genomic sequencing for infectious disease elimination.

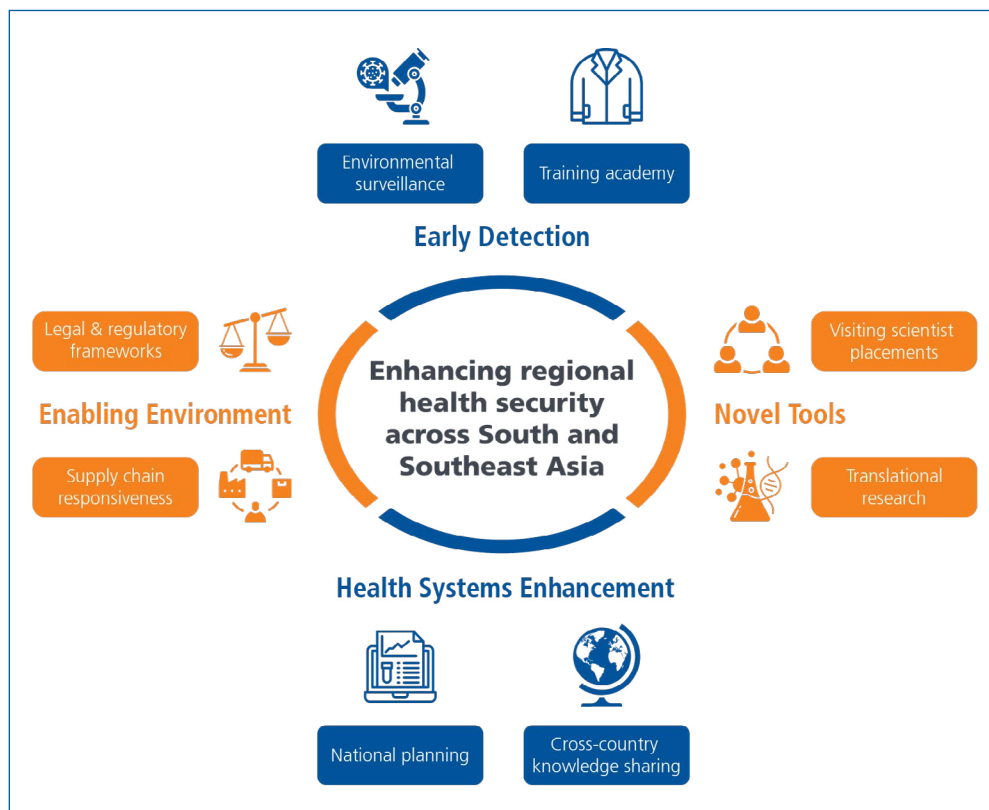
Asia PGI focuses on multiple aspects of disease control, including the early detection of pathogens, novel tool development, health system enhancement as well as conducive policy, legal and regulatory environments.

#### Asia PGI's key activities include:

- Training and capacity building in genomics and bioinformatics
- Genomics use-case development with a focus on wastewater and environmental surveillance, tuberculosis, arboviral disease and anti-microbial resistance
- Translational research
- National planning and budgeting for pathogen genomics
- Cross-country knowledge sharing
- Legal and regulatory profiling
- Market shaping and supply chain responsiveness

Our initial efforts focused on conducting a country-led assessment on the status of pathogen genomics in the region.

### COP workstreams and Asia PGI activities



### Who we work with

Our network includes more than 50 partners across 15 Asia countries representing government, academia, public/private laboratories and NGOs. We work closely with industry partners to tackle innovative solutions to pathogen detection. We also bring together a consortium of Singapore-based partners with a breadth of scientific and technical expertise, and an extensive track-record of regional capacity development.

We have strong collaborations with international partners (such as AVSSR, ASEAN and WHO offices) to ensure that our activities are aligned with regional and global efforts.

### Find out more

Scan or click QR code to view the regional road map for pathogen genomics.



Or visit our website at:  
<https://www.duke-nus.edu.sg/cop>

### Contact us

For general enquiries:  
[cop@duke-nus.edu.sg](mailto:cop@duke-nus.edu.sg)

For opportunities and partnerships:  
**Assistant Prof Ruklanthi de Alwis**  
Deputy Director  
Centre for Outbreak Preparedness  
[rukie.dealwis@duke-nus.edu.sg](mailto:rukie.dealwis@duke-nus.edu.sg)