



17 OCTOBER 2018

AGEING, LONGEVITY AND HEALTH – NEW FRONTIERS AND PERSPECTIVES

2018 INTERNATIONAL ALLIANCE OF RESEARCH UNIVERSITIES (IARU)
AGEING, LONGEVITY AND HEALTH SCIENTIFIC AND GRADUATE STUDENT CONFERENCE

Organised by:
Centre for Ageing Research and Education,
Duke NUS Medical School, Singapore



We have arrived at an era where people are living longer. At this crossroads, the science, art and practice of longevity is alive with a horizon of possibilities to unlock the longevity dividend. Radical ideas and interdisciplinary approaches have been introduced to understand the experience of ageing from the perspectives of health, labour, housing, transport, urban planning, leisure, social participation, education and intergenerational relationships. This conference aims to bring together leading thinkers and practitioners and feature some of the best practices in the field of population ageing.

The Centre for Ageing Research and Education [CARE] is proud to host the 2018 International Alliance of Research Universities [IARU] Ageing, Longevity and Health [ALH] Scientific and Graduate Student Conference. The conference will be held at the Duke-NUS Medical School on 17 October 2018. The conference will feature key research initiatives of the Ageing, Longevity and Health network.

CONFERENCE THEMATIC FOCUS:

- HEALTHY AGEING
- INTERVENTIONS TO SUPPORT AT RISK OLDER ADULTS IN THE COMMUNITY
- EMPLOYMENT AND EMPLOYABILITY OF OLDER ADULTS
- AGEING, TECHNOLOGY AND THE ENVIRONMENT

Graduate Student Conference [GSC]

The Graduate Student Conference [GSC] serves as an interdisciplinary platform for graduate students to share their research and explore the possibility of collaborative partnerships within the IARU Network.

Click on this link to read more about the conference:

<https://webapps.duke-nus.edu.sg/care/IARUAgeingLongevityandHealth2018/about/>

PROGRAMME

AGEING, LONGEVITY AND HEALTH - NEW FRONTIERS AND PERSPECTIVES

Welcome Addresses 09:00 - 09:15	<p>Sarah Harper, CBE Co-Director, Oxford Institute of Population Ageing; Professor, University of Oxford</p> <p>Angelique Chan Executive Director, Centre for Ageing Research and Education; Associate Professor, Health Services and Systems Research, Duke-NUS Medical School</p>
Healthy Ageing 09:15 - 10:45	<p>Lene Juel Rasmussen Managing Director, Center for Healthy Aging; Professor, University of Copenhagen</p> <p>Woon-Puay Koh Director, Centre for Clinician-Scientist Development; Professor, Health Services and Systems Research, Duke-NUS Medical School</p> <p>Brian Kennedy Director, National University Health System Centre for Healthy Ageing; Distinguished Professor, Yong Loo Lin School of Medicine, National University Singapore</p>
10:45 - 11:15	Tea Break
Interventions to Support At Risk Older Adults in the Community 11:15 - 12:45	<p>Hiroko Akiyama Professor, Institute of Gerontology, University of Tokyo</p> <p>Zhang Lei Associate Professor, Institute of Population Research, Peking University</p> <p>Angelique Chan Executive Director, Centre for Ageing Research and Education; Associate Professor, Health Services and Systems Research, Duke-NUS Medical School</p> <p>Ad Maulod Research Fellow, Centre for Ageing Research and Education, Duke-NUS Medical School</p>
12:45 - 13:30	Lunch Reception
13:30 - 14:30	Graduate Student Poster Presentations
Ageing, Technology and the Environment 14:30 - 16:00	<p>George Leeson Director, Oxford Institute of Population Ageing; Senior Research Fellow, University of Oxford</p> <p>Miao Chun Yan Director, Joint NTU-UBC Research Centre of Excellence in Active Living for the Elderly; Associate Professor, Nanyang Technological University</p> <p>Belinda Yuen Research Director, Lee Kuan Yew Centre for Innovative Cities, Professional Fellow, Singapore University of Technology and Design</p>
16:00- 16:30	Tea Break
Employment and Employability 16:30 - 17:30	<p>Sarah Harper, CBE Co-Director, Oxford Institute of Population Ageing; Professor, University of Oxford</p> <p>Stephen Hoskins Senior Research Associate, Centre for Research on the Economics of Ageing, Singapore Management University</p>
Summary and Closing 17:30 - 18:00	<p>Centre for Ageing Research and Education</p>
18:00	End of Conference / Speakers' Photography Session

INVITED SPEAKERS

AGEING, LONGEVITY AND HEALTH - NEW FRONTIERS AND PERSPECTIVES



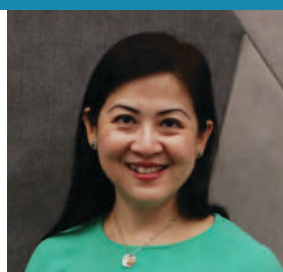
Lene Juel Rasmussen

Managing Director,
Center for Healthy
Ageing; Professor,
University of Copenhagen



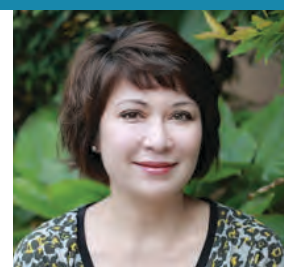
Brian Kennedy

Director, National University
Health System Centre for
Healthy Ageing;
Distinguished Professor,
Yong Loo Lin School of
Medicine, National
University Singapore



Woon-Puay Koh

Director, Centre for
Clinician-Scientist
Development;
Professor,
Health Services and
Systems Research,
Duke-NUS Medical School



Angelique Chan

Executive Director,
Centre for Ageing
Research and Education;
Associate Professor,
Health Services and
Systems Research,
Duke-NUS School



Ad Maulod

Research Fellow, Centre
for Ageing Research and
Education,
Duke-NUS Medical
School



Hiroko Akiyama

Professor,
Institute of Gerontology,
University of Tokyo



Zhang Lei

Associate Professor,
Institute of Population
Research,
Peking University



George Leeson

Director, Oxford
Institute of Population
Ageing;
Senior Research
Fellow, University of
Oxford



Belinda Yuen

Research Director,
Lee Kuan Yew Centre
for Innovative Cities;
Professorial Fellow,
Singapore University of
Technology and Design



Miao Chun Yan

Director, Joint NTU-UBC
Research Centre of
Excellence in Active
Living for the Elderly;
Associate Professor,
Nanyang Technological
University



Sarah Harper, CBE

Co-Director, Oxford
Institute of Population
Ageing; Professor,
University of Oxford



Stephen Hoskins

Senior Research
Associate, Centre for
Research on the
Economics of Ageing,
Singapore Management
University

REGISTRATION

AGEING, LONGEVITY AND HEALTH - NEW FRONTIERS AND PERSPECTIVES

Early Bird Registration

For more information, visit our website at

<https://webapps.duke-nus.edu.sg/care/IARUAgeingLongevityandHealth2018/registration/>

EARLY BIRD REGISTRATION ENDS 14 SEPTEMBER 2018

Register early and enjoy savings!

	EARLY BIRD 17 July - 14 September	REGULAR 14 September - 12 October
SCIENTIFIC AND GRADUATE STUDENT CONFERENCE	200	300
Registrations from Students and Voluntary Welfare Organisations [VWO] are entitled to 20% discount off the conference published rates		
Rates quoted in SGD and inclusive of 7% GST		

Convenient ways to register:

1. Online: [Click here to register](#)
2. Email: care@duke-nus.edu.sg

*A non-refundable \$20 processing fee applies for all emailed registrations.



The Graduate Student Conference (GSC) serves as an interdisciplinary platform for graduate students to share their research and explore the possibility of collaborative partnerships within the International Alliance of Research Universities (IARU) Network. The call for abstracts is open to all Graduate Students both within the IARU Network as well as other universities.

A limited number of conference support applications available to graduate students will be sponsored by International Alliance of Research Universities (IARU) and the Centre for Ageing Research and Education (CARE).

Candidates whose abstracts are selected for the poster presentation are eligible to apply for partial conference support of up to SGD\$1500.00**

Key Dates:

10 August 2018: Abstract submission closing date

17 August 2018: Notification to authors of shortlisted abstracts

The Committee will review all abstracts and author(s) of shortlisted abstracts will be notified.

** Conditions of Conference Support Application:

i) Application must be submitted for consideration.

ii) Actual amount granted will be based on reimbursements of two main items – cost of airfares and accommodation.

To find out more, visit

<https://webapps.duke-nus.edu.sg/care/IARUAgeingLongevityandHealth2018/abstracts/>



Visiting Singapore

Close to the heart of the city and just 30 minutes from Singapore Changi Airport, delegates to Singapore will have no trouble filling their down time during their stay when they find themselves immersed in Singapore's rich tapestry of cultures, heritage hubs, art and gastronomical experiences.

Discover your eclectic experience and the hidden gems in Singapore's ethnic districts, Gardens by the Bay and more! Visit <http://www.visitsingapore.com/en/> for more details!

Accommodation

CARE has selected a range of hotels in the vicinity of the conference that will meet your needs. Click here to find out more:

<https://webapps.duke-nus.edu.sg/care/IARUAgeingLongevityandHealth2018/accommodation/>



Sponsorship allows you to be a visible part of this prominent Ageing, Longevity and Health Conference that aims to bring critical knowledge to the forefront of healthy and successful ageing. Support received for the conference would also be used to provide scholarships to researchers from developing countries. A variety of sponsorship opportunities are available to meet your communication, networking and budget requirements at the conference.

We are looking for sponsorship for the following:

- Title Sponsorship
- Advertisements
- Sponsorship in kind

To learn more, visit

<https://webapps.duke-nus.edu.sg/care/IARUAgeingLongevityandHealth2018/opportunities/>



<https://www.facebook.com/dukecarenus/>



<https://twitter.com/caredukenus>

For further inquiries, please contact the conference secretariat at: care@duke-nus.edu.sg

Centre for Ageing Research and Education (CARE)

Duke-NUS Medical School

8 College Road, Singapore 169857

Email: care@duke-nus.edu.sg Website: www.duke-nus.edu.sg/care/